

Montefiore • EINSTEIN

DEPARTMENT of NEUROSURGERY



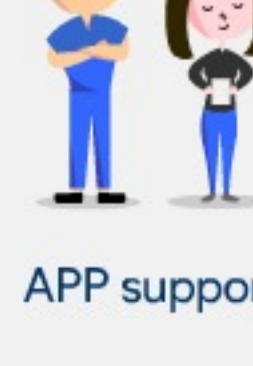
Some QUICK FACTS about our program



over 700 beds
~15 referral sites



>15 clinical trials



APP support



clinical & lab research



over 2200 cases
per year

MAIN CAMPUS

- A Main Hospital
- B North Central Bronx Foreman Wing/ER
- C
- D Children's Hospital
- E Neurosurgery Offices
- F Ambulatory
- G Resident Housing

EINSTEIN MEDICAL SCHOOL



DIVISIONS & FACULTY

FUNCTIONAL Deep brain stimulation for movement disorders, epilepsy surgery, vagal nerve stimulators, responsive neurostimulation



Emad Eskandar, MD
Chairman



Nupen Bai, MD



Andrew Kobets, MD



Mandana Behbahani, MD

SPINE Combined Neurosurgery/Orthopedic Departments, Degenerative spine disorders, deformity correction, primary and metastatic diseases, extradural/intradural tumors



Raza Yassar, MD
Program Director



Sakran Murthy, DO



Yarobov Goffend, MD



Jonathan Krystal, MD
Orthopedics



Ananth Eswarapu, MD
Orthopedics



Mitchell Fourman, MD
Orthopedics



Alex Ho, MD
Orthopedics

ONCOLOGY Primary CNS tumors, metastatic brain disease, skull base tumors, sellar/suprasellar tumors, radiosurgery



Vijay Agarwal, MD



Patrick Lasala, MD



Benjamin Himes, MD PhD



Celina Crisman, MD

VASCULAR Open and Endovascular repair of intracranial aneurysms, dural arteriovenous fistulas, arteriovenous malformations, middle meningeal artery embolization, tumor embolization



David Altschul, MD



Neil Harariwall, MD



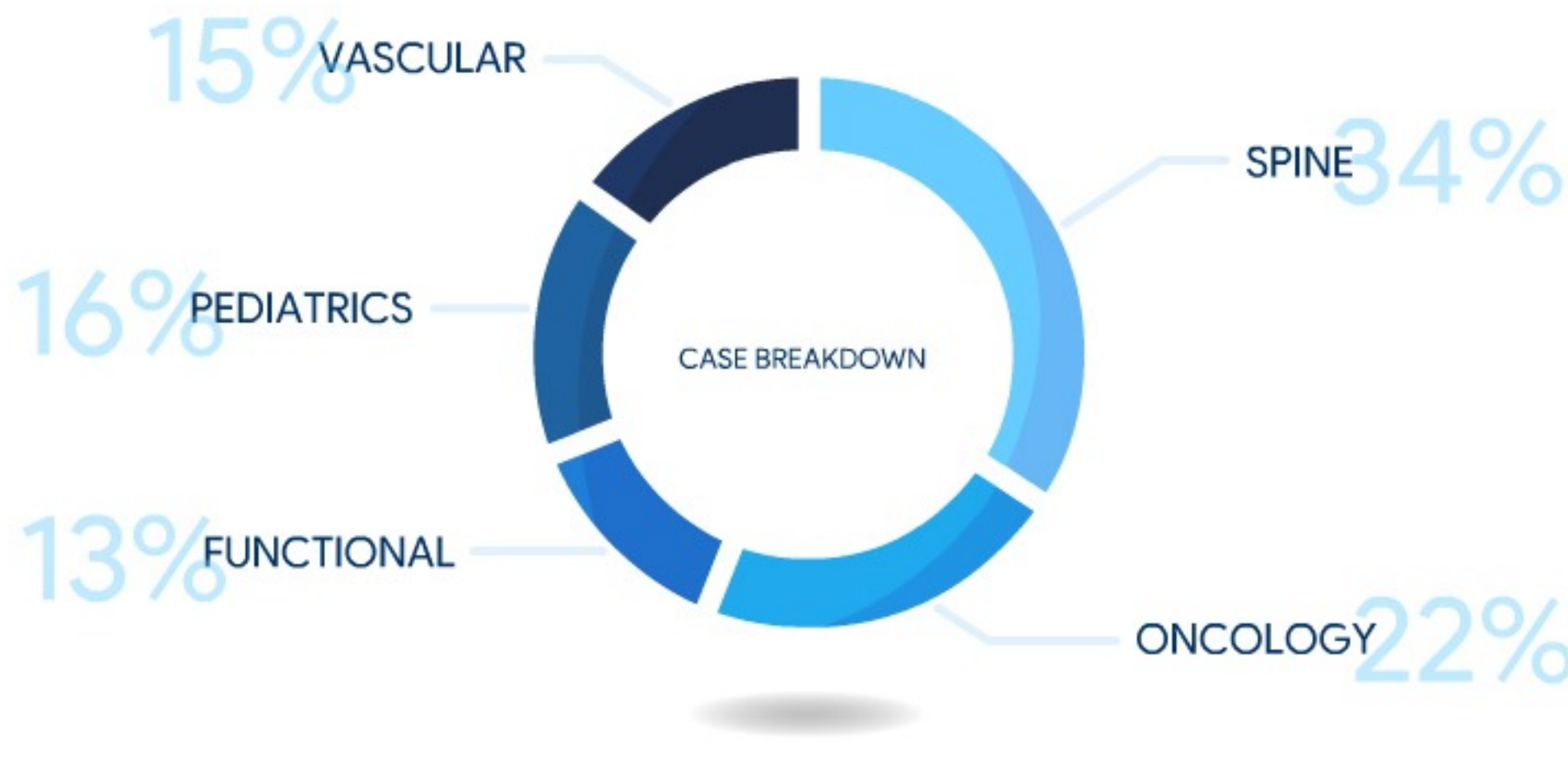
Allen Brook, MD
Interventional Radiology



Richard Zampolin, MD
Interventional Radiology



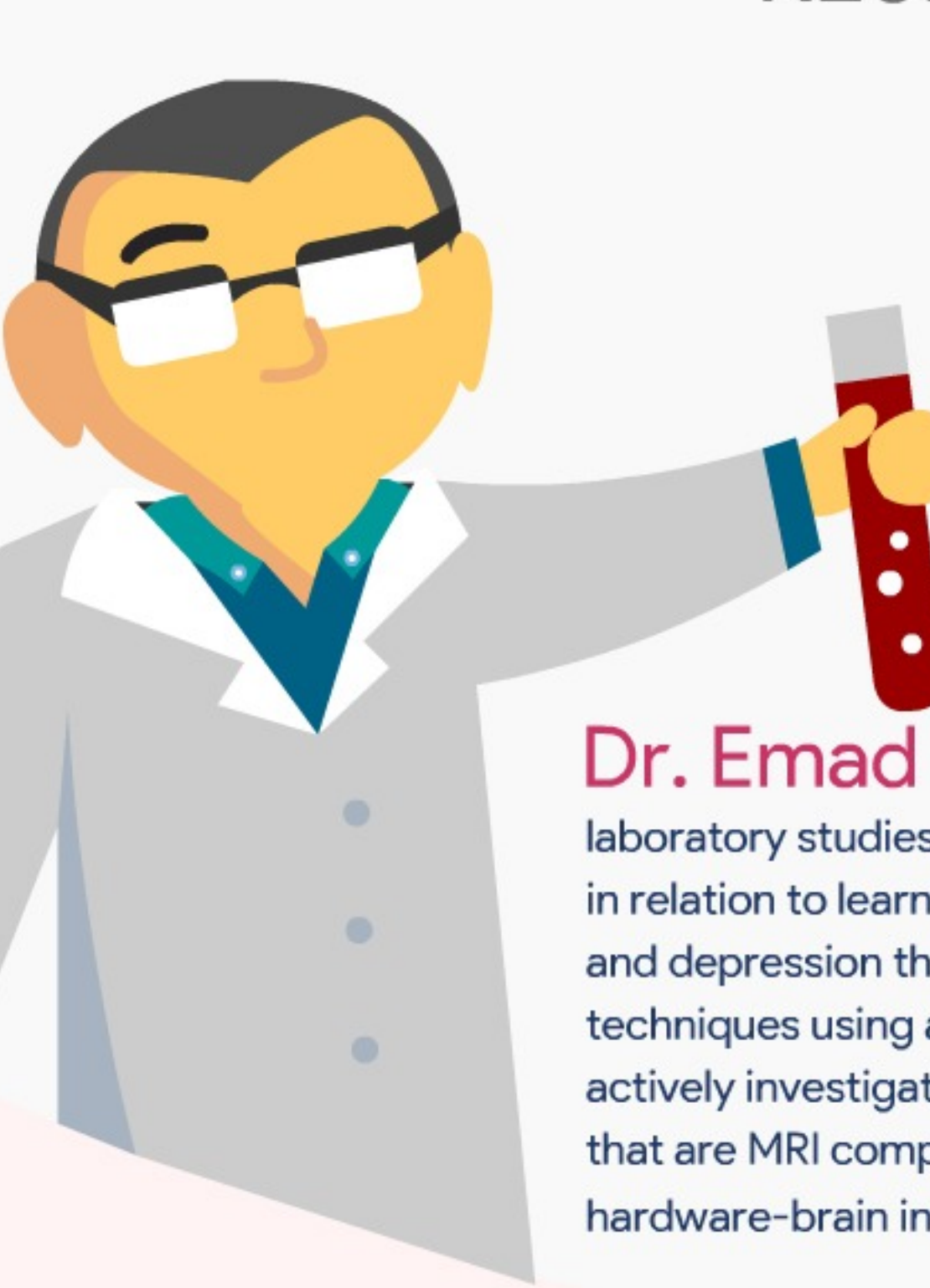
Scott Kyu Lee, MD
Interventional Radiology



We serve the underprivileged

The Bronx has a population of 1.4 million people with a median income of 42k per year, 25% living in poverty, and approximately 10% are uninsured.

RESEARCH OPPORTUNITIES



Dr. Emad Eskandar's laboratory studies the role of the basal ganglia in relation to learning, motivation, drug addiction and depression through various neuromodulation techniques using a primate model. His group is also actively investigating new stimulator technologies that are MRI compatible as well as improving the hardware-brain interface.

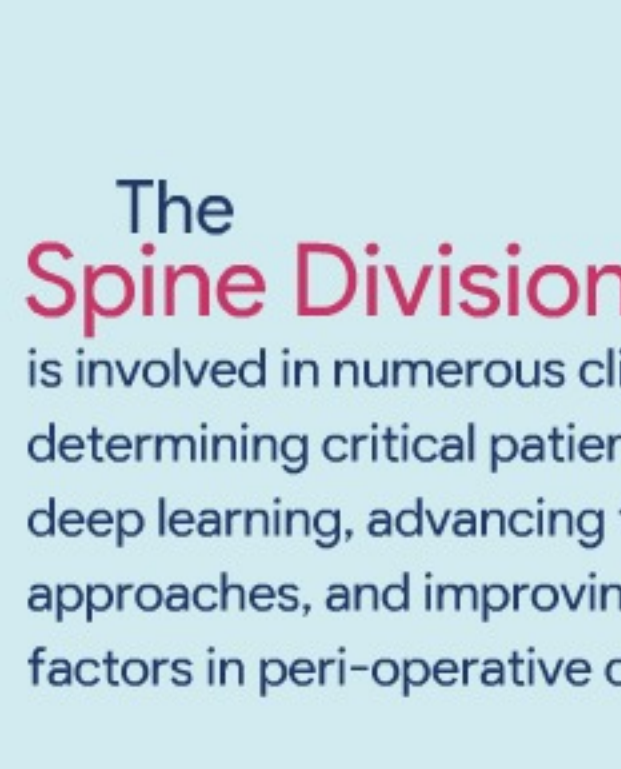


Dr. Benjamin Himes studies extracellular vesicles and the tumor microenvironment in Glioblastoma, and how these particles play a role in shaping the immune landscape that contributes to overall immunosuppression, evasion, and treatment resistance.



The Neurosurgical Vascular Division

is active in numerous clinical trials (over 15 currently) encompassing the latest devices in endovascular repair of aneurysms as well as redefining interventional therapy for stroke.



The Spine Division

is involved in numerous clinical and quality outcomes research including determining critical patient characteristics affecting surgical selection using AI deep learning, advancing techniques in both traditional and minimally invasive approaches, and improving overall outcomes through identifying critical factors in peri-operative care.



Global Health Initiative

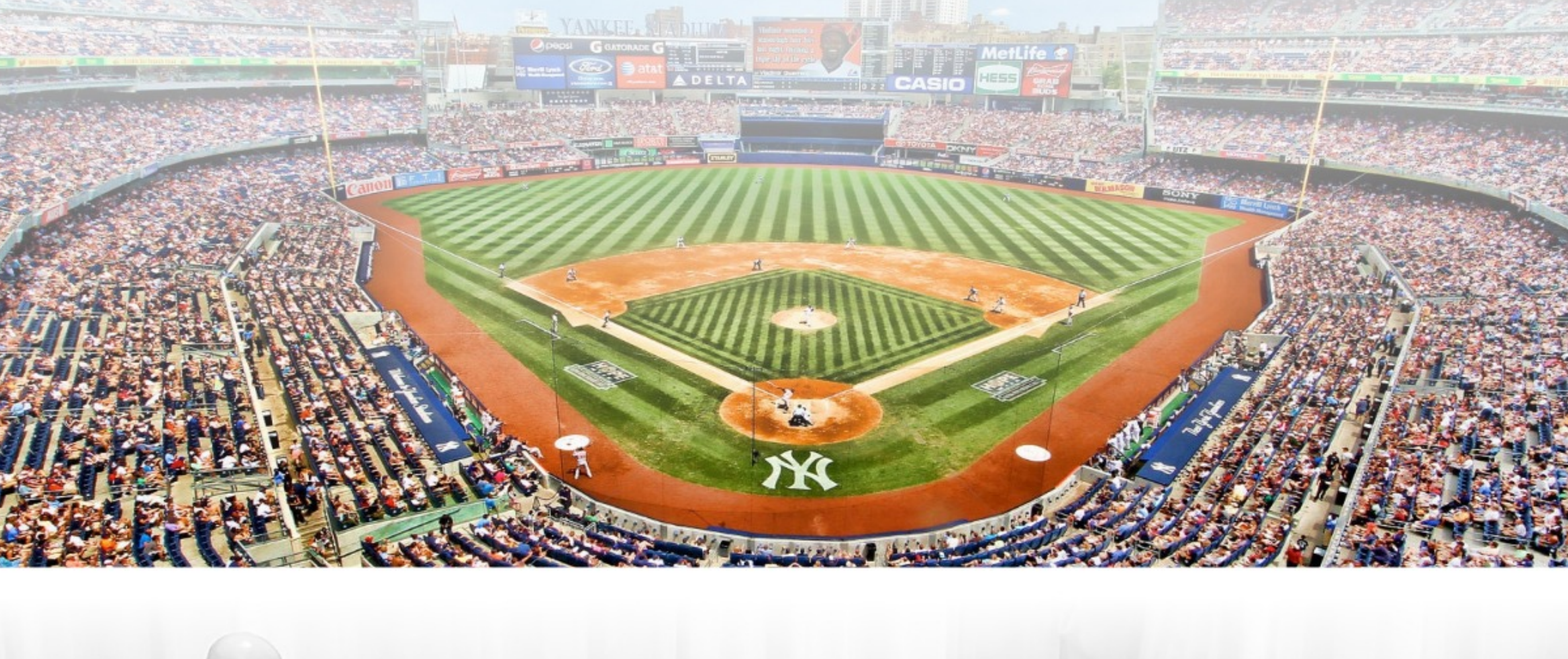
Established in 2014 in conjunction with the EINSTEIN Global Health Center and the Virtue Foundation, the International Mongolia Surgical trip is a bi-annual, integrated, international surgical education program allowing senior residents to experience first hand neurosurgical care in Ulaanbaatar, Mongolia.



ULAANBAATAR MONGOLIA

Resident Wellness

Residency is a difficult process, and these years may be some of the most trying years in one's medical career. Residents are faced with a steep learning curve, difficult decisions, and long hours. Finding the balance between education and patient care responsibilities, along with building one's personal and family life, can be a great challenge. At Montefiore Einstein, our aim is to bring about a culture of wellness to all our residents.



Visit our website to know more:
<https://virtualltour.montefiore.org/neurological-surgery-residency>

Contact Us
Katherine Ramirez, Program Coordinator
katramir@montefiore.org

